

Impose-X 6 Updates

Notice for users of previous Impose-X versions:

The new version of Impose-X contains core changes to all data structures. Layouts modified by Impose-X are not backward compatible with earlier versions of the program. Please read the following instructions before upgrading your system:

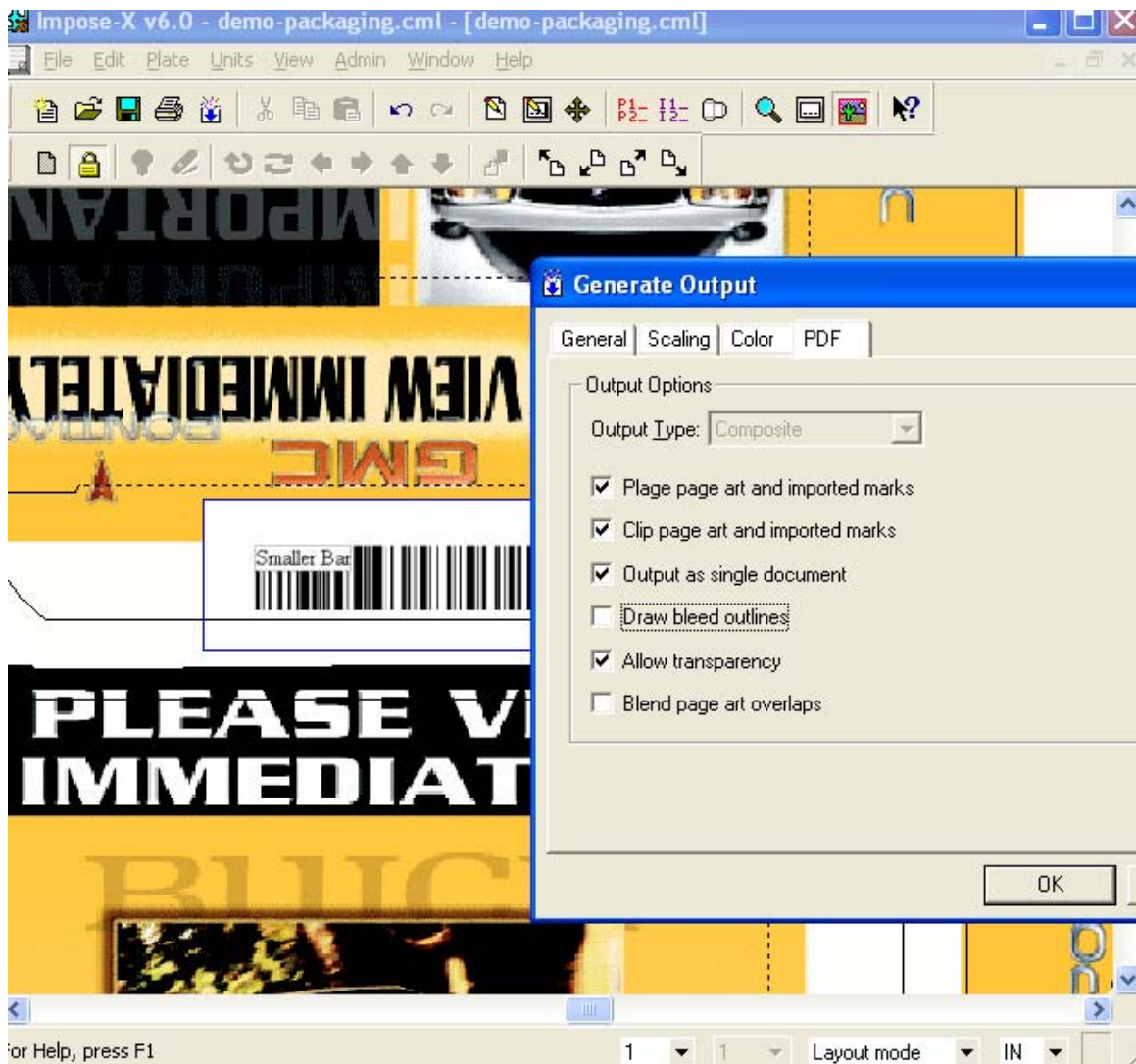
Working with version 6 in the same install folder as a previous Impose-X installation, will update all data files for folds, templates, and marks. Please be cautious and back up your existing installation, or make thorough use of the demonstration version in a different install folder USING A DIFFERENT LIB FOLDER before completing your transition to the new program.

As most experienced users know, the “lib” folder is of critical importance and should always be backed up in any case. If you are trialing the new version as a demonstration, simply run the installer and then COPY your current Impose-X lib folder into the new Impose-X installation folder.

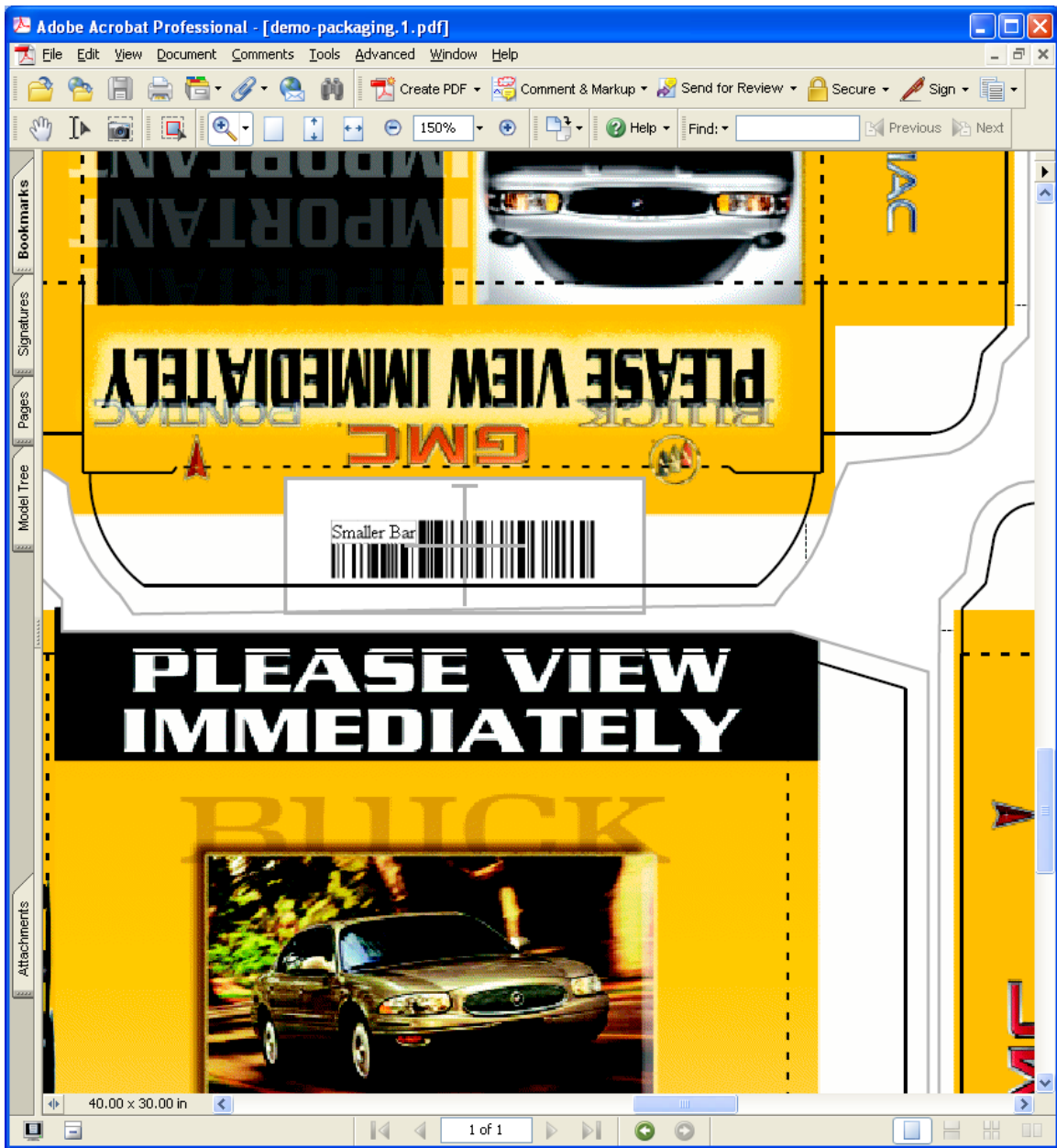
New PDF capabilities

The new PDF system is more efficient and has more capabilities for future enhancements. Imported PDF pages are cached on the fly so there is no artwork duplication in the PDF file data. This means that multi-ups of the same page artwork consume only slightly more disk space than a single-up. The “draw bleeds” option has been enhanced to draw bleed rectangles or package outlines on top of placed artwork, so that final output can be position-proofed directly from the Impose-X PDF output files. Additionally, when bleed outlines are drawn, a center target cross is also drawn. This allows for easy positioning verification in Acrobat with the Acrobat measuring tool.

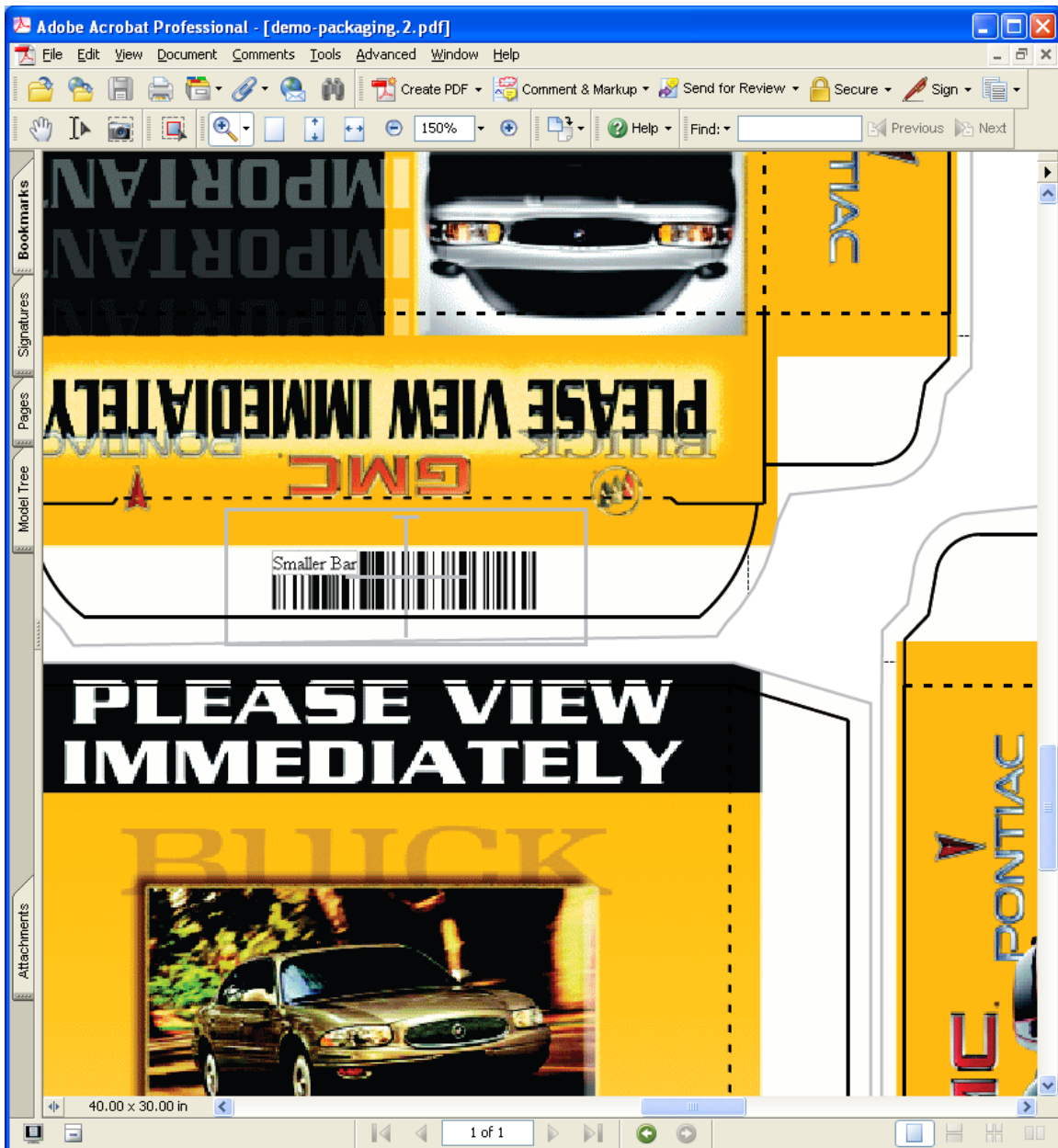
PDF output now supports transparent marks and allows blending overlaps of placed pages. Here is an Impose-X layout showing an imported (barcode) mark placed on a package flap. Notice the blue outline showing the actual size of the mark file including a white background overlapping the assigned page art.



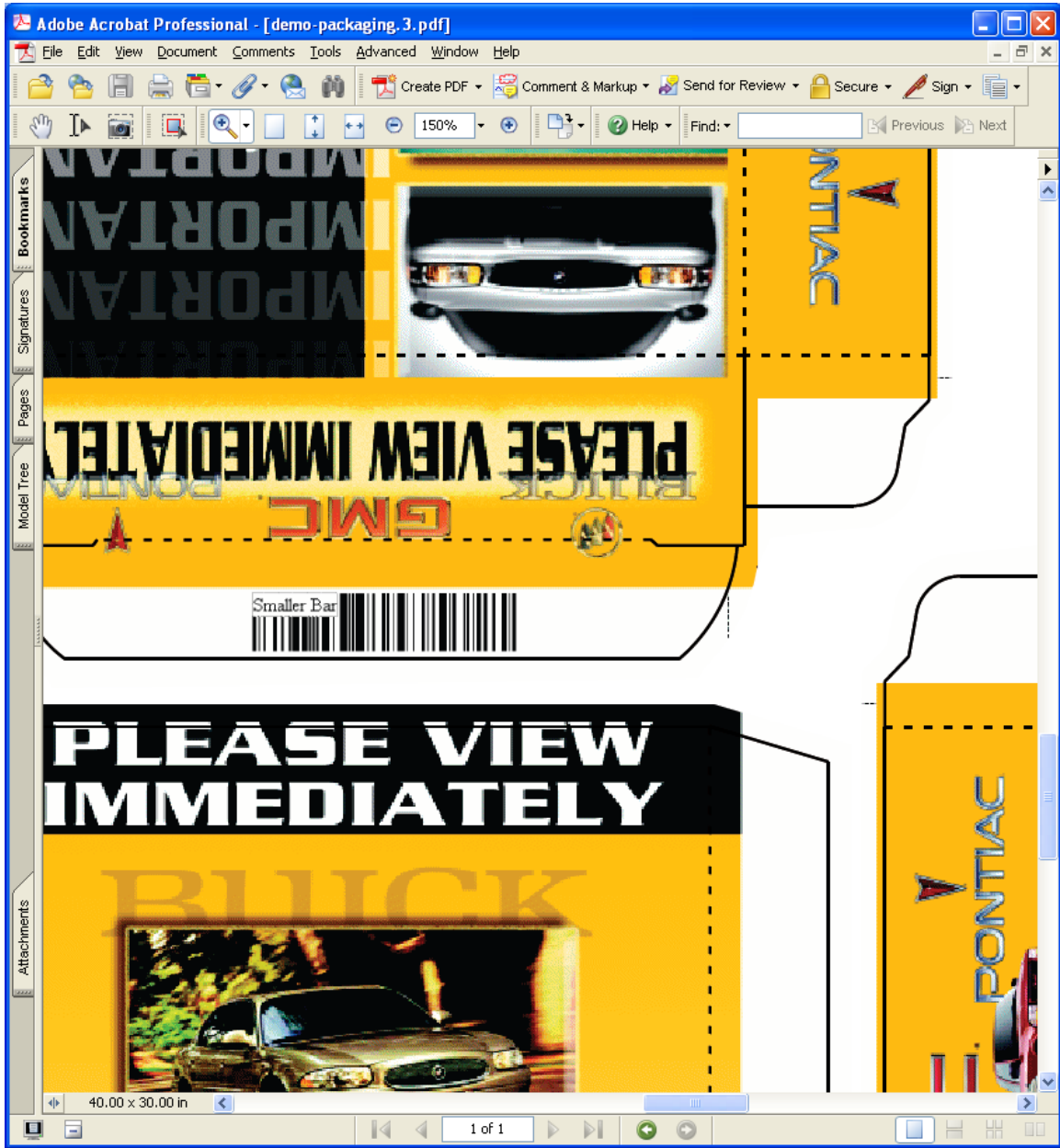
This image shows how the Impose-X PDF output look without setting transparency for the barcode mark. Bleed clipping paths and package outlines were drawn to help illustrate the positioning.



Here is what the same output looks like with transparency enabled for the barcode mark and with clipping paths and bleed outlines still drawn. One can clearly see that the white background of the mark is now overprinted by the colors in the page art assignment.



Here is the same output drawing the package outlines, but without the clipping paths and center targets:



Automatic sheet size calculation from CAD file drawing size

This time saving option eliminates the need to enter a sheet size in the Job Wizard when importing CAD package layouts. When this feature is enabled, the sheet size is calculated from the maximum extent of dieline packages in the layout. The user can add additional space around the layout simply by specifying the margins.

Job Wizard - Step 2

What size is the press sheet?

Width: 24 Length/cutoff: 20

Use CAD drawing size as sheet size

Add margins to the calculated sheet size?

Gripper: 1 Left: 0.5

Tail: 0.75 Right: 1.5

Which document shift profile would you like to apply to each page?

Profile: <None>

Use a different profile for backup (flopped) pages

Backup: <None>

What press will the forms run on?

Press: 900

Would you like to use a predefined set of master marks?

Marks: 6000 Demo Marks

Advanced...

< Back Next > Finish Cancel Help

Customized Package clipping paths for each burn

Impose-X Package Manager (custom clipping mode)

Continues and improved from version 5, each Package burn in the layout can have a customized clipping path. Select a single burn by clicking on it and then open the Package Manager window. You will see “custom clipping mode” in the window title bar and page art assignment and shift controls will be disabled. Use the standard path tools to modify the clipping path as desired.

Previews

Previews have often been an annoyance in the past. The changes in this version should minimize or eliminate these issues.

“Snap” PDF color separation auto-positioning

When PDF files are imposed, Impose-X uses it’s own PDF parsing technology to detect color separation positioning rectangles for snap positioning page artwork to burns. The next pages will describe the snap positioning capability in more detail.

Additional error handling and logging

Although still not complete, a significant amount of new error handling code has been added to catch Impose-X when it does something bad. Whenever possible, these errors are written to the Impose-X log file. Reporting these errors back to Nuglyphix will help us repair any problems that occur.

Burn lock improvements

Edit Image #1 (Locked)

The burn lock control is improved from version 5. Burn positions and rotation are locked on all new import mode (non-manual) layouts and whenever an existing layout file is loaded from disk. Windows that are affected by the burn lock will display “locked” in the title bar to indicate that the burn lock is on.

Improved positioning accuracy

Fractional accuracy moved into the subatomic.

Floating point values (fractions) in previous versions of Impose-X were stored as 4-byte, 32 bit values with maximum precision of 6 digits. Excluding a few non-critical functions and stepper control (backward compatibility) structures, all floating point values are now stored as 8-byte 64 bit values with a maximum precision of 15 digits.

Each Impose-X image now stores its own individual snap positioning data. This includes a default snap positioning direction, snap-to-burn or snap-to-trim option, and PDF separation color separation data as discussed below. When new images are created, they use the system default snap positioning settings, but may be individually customized at any time.

NOTE: snap positioning color separations and the default positioning based on page artwork sizes are subsequently referred to as “snap positioning elements” and “snap positioning color separations”.

Automatic output color-list

Because some RIPs charge for color output, Impose-X will no longer add CMYK process colors to the output color list unless they are detected in the assigned page art files. This means that users who are not assigning color files in a layout will not have to turn off the process colors in the Generate Output dialog to avoid having Impose-X add color plate names, lines, and text marks. Packaging users should note that the Impose-X default “die” spot color will not cause a spot color in the output file, but custom spot colors used for positioning would do so. When no process or spot color is detected in assigned page art, digital marks will be filled and stroked with at 100% gray color (black). In color plates, these are drawn in process and spot colors.

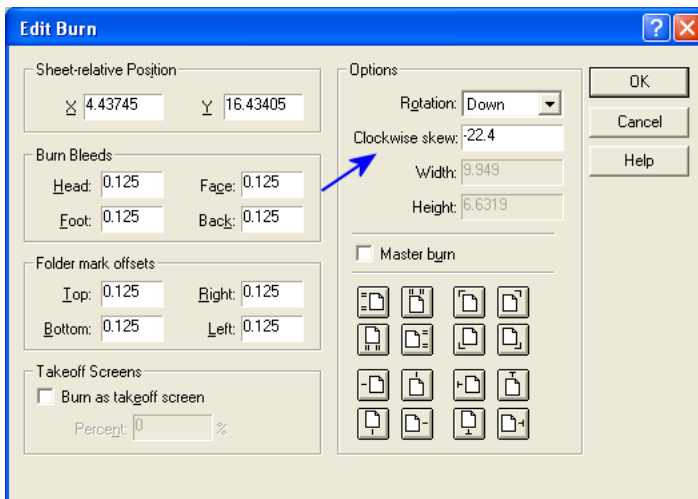
New licensing system

This system is flexible and faster than the old system. A 30-day demo is automatically enabled with a new installation. PDF output is watermarked. A non-watermark “Production Demo” is available upon request.

Rotate burns to any angle

Burns and their associated Images are normally rotated in 90-degree increments. In version 6 the user may add an additional clockwise “skew” in the Edit Image or Image List dialogs. The skew amount can be any value between 45.0 and –45.00. The skew rotation is added to the current Burn/Image rotation. When DDES packages are imported, this setting is handled automatically on a burn-by-burn basis. A custom skew value can be entered separately for any burn in a layout, or applied to any number of burns by entering a skew value in the Image List or Edit Image dialogs.

NOTE: A skew value entered in the Edit Burn dialog will not be applied to the burn’s image and will not appear in the Edit Image or Image List dialogs. For example, if –22.4 is entered as the skew value for a burn in the Edit Burn dialog, and the user would later right-click on a burn and bring up the Edit Image dialog, they will not see the –22.4 value. However, entering the same value in the Edit Image dialog will apply a –22.4 degree skew to ALL burns of that image.

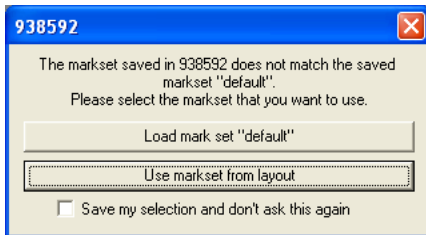


History list file browsing controls for Imported Marks and CAD Import

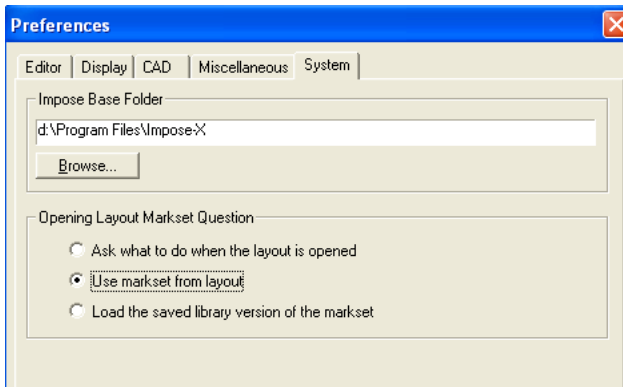
The new file path history lists “remember” the last 20 files for quick and easy path assignments.

New dialog and preferences option for the load layout-markset question

When a layout is loaded and the markset data in the layout does not match the saved library version of the markset, the user is asked to choose between these marksets. The new dialog box for this question makes the selection easier to understand and provides the option of saving the selection as a preference.



This preference is saved under the System tab of the main preferences dialog.



New Edit Image and Image List dialog control layout

New options have been added to support the new positioning features. The Colors list displays all colors detected in the assigned artwork and if the color is chosen for snap positioning, a '+' is prefixed to the color name.

Clockwise skew is entered in the rotation section of the dialogs and there are two new checkbox controls, "Update Image Colors" and "Preview Page". When "Update Image Colors" is selected, Impose-X will perform color separation positioning detection on any page entered in the file browser control. Since this can be time consuming in some cases, toggling this option off will force checking only on the new page art size and color separation testing will not occur until "OK" is checked. Previewing files also uses processing time, so the "Preview Page" checkbox is provided to allow for faster page assignment. As in the previous version, clicking on the thumbnail preview will display a larger preview.

Assignment: C:\Customer\WesternContainer\402639TRP_Fpo.pdf<1>

Burn size: X: 7.8437 Y: 5 Image size: X: 16.333333 Y: 12.333333 Page count: 1

Image name: SUB1 Type: Portable Document Format (PDF)

Rotation

Rotate all burns of image: No Change

Rotate image inside burn: Up

Clockwise skew: -13.25

Form mark

Number: 0 On Spine

Version:

Bleeds

Head: 0.125

Foot: 0.125

Face: 0.125

Back: 0.125

Full Bleed

No Bleed

Browse Options

Update image colors

Preview page

Colors

Black

Cyan

Magenta

Yellow

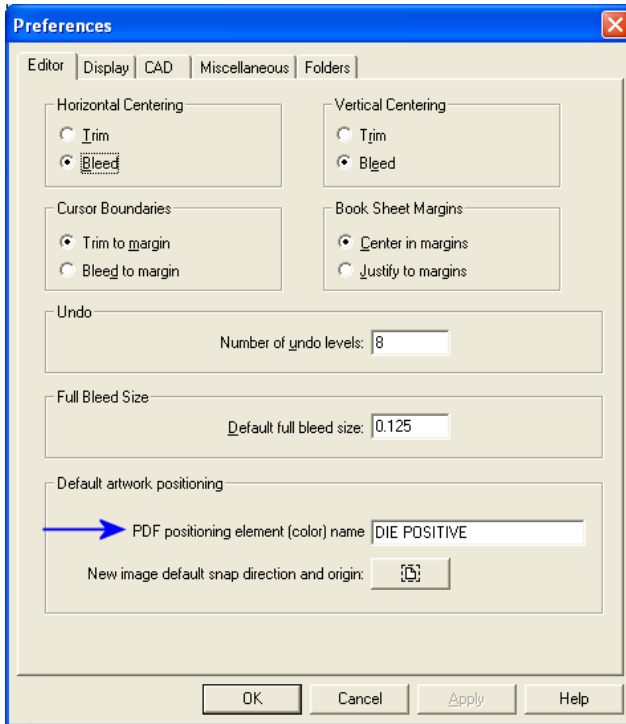
+ PANTONE 485 CV die

Preview

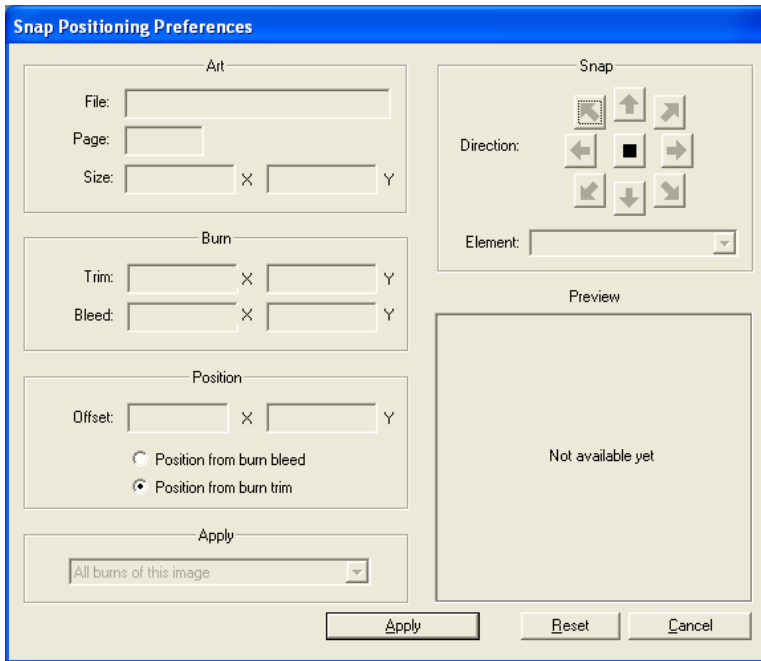
Color detection is NOT performed on any embedded image files. So please be aware that you cannot rely on Impose-X for pre-flight detection of RGB or spot colors in embedded images. If an RGB color-space is defined in the PDF data, it will appear in the Colors list for your information, but it will not result in output of an "RGB" color name in the Impose-X digital plate output.

Snap positioning preference options

The user can enter a system default color for auto-positioning in the Editor Preferences.

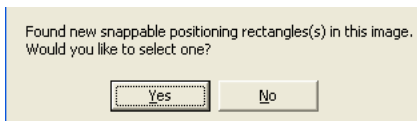


If you wish to set the default snap direction and origin for all new images in Impose-X, click on the snap button in this dialog. You can then select the snap direction and the “from trim” or “from bleed” positioning options.

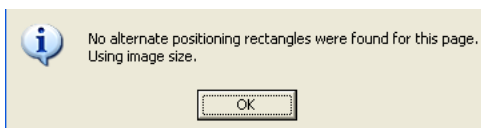


Snap positioning new assignments

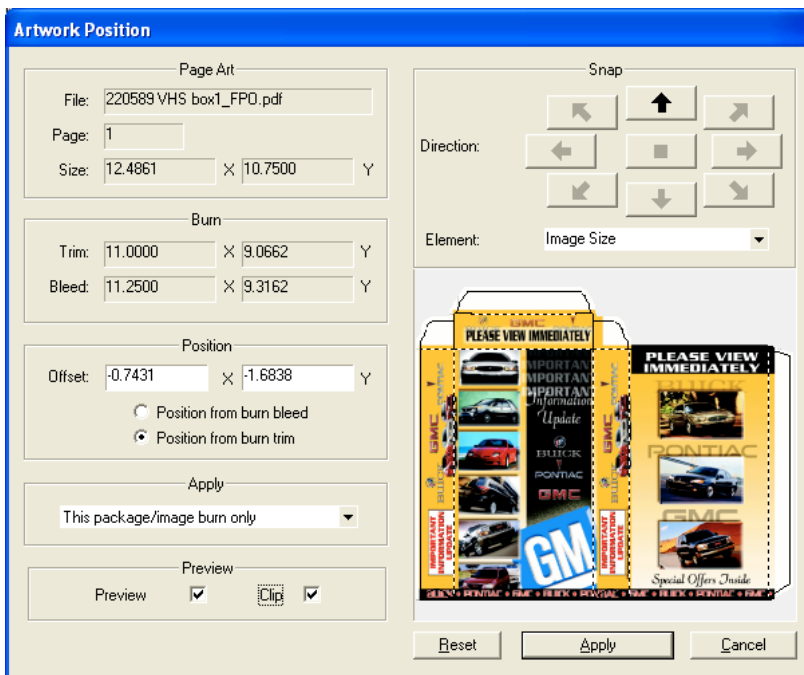
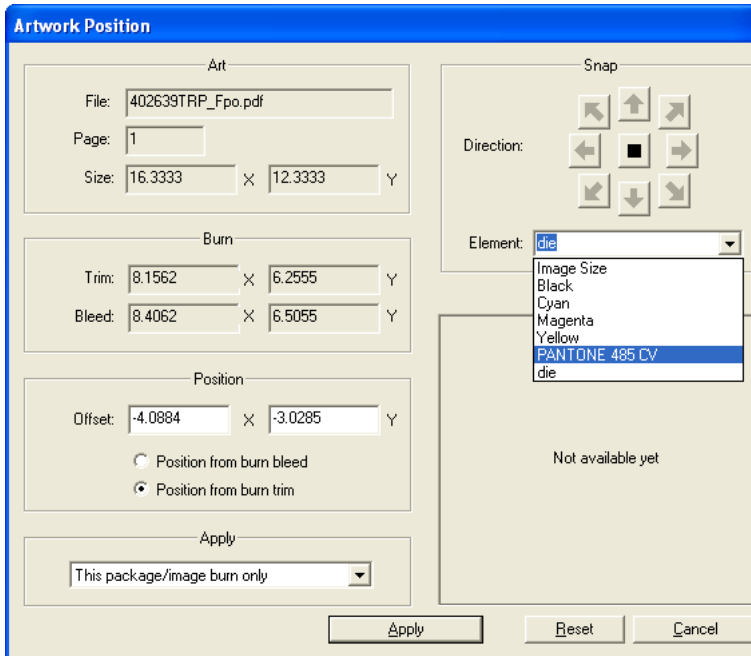
When a new PDF page is assigned to a layout, Impose-X will attempt to detect the required information for snap positioning. If a positioning color separation is detected and it matches the image's named snap color separation, the Impose-X will automatically use that information for snap positioning the page art. If snap-positioning elements are found, but do not match the previous image settings, the user will be prompted to select a new color separation snap.



If the image had a previous snap selection, or default, and a page is assigned where no separation positions are detected, the user will be informed and the default snap positioning based on image size will be used.



When snap-positioning data has been detected, the positioning dialog element drop down list will be populated with all snappable colors. Select the desired snap color, direction, and position from trim or bleed. Please be aware that all snap positioning will be effected by the combination of the snap positioning Element, Direction, and from-trim/from-bleed application option.



New status bar controls

Form, Plate, Mode, and Units selection controls have been moved from the Control Panel to the status bar.

